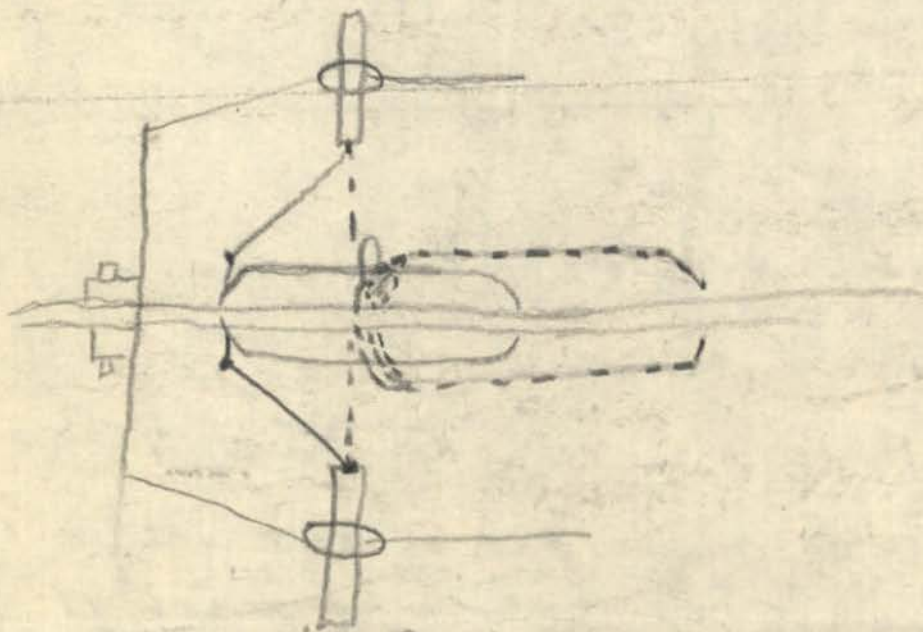


where the jets are fastened in I could not figure it out so will leave that to you the drawings I sent in sat. with the jet are O.K. that is the jet. - but some of the centrifugal power mechanism is wrong in design. Ubaldo had two or three sets of drawings and this copy I am sending you are plain and I believe better drawings.

In drawing #2 where turnbuckles are shown in cables - they are shortened or lengthened to suit - like this as the weights fly or pull outward - the weights must pull the cable straight out or up and down - see no beight in the line holding the weight - line must be straight when engines are in motion and up to speed allowing every thing else is in proportion O.K.



drawing 3.