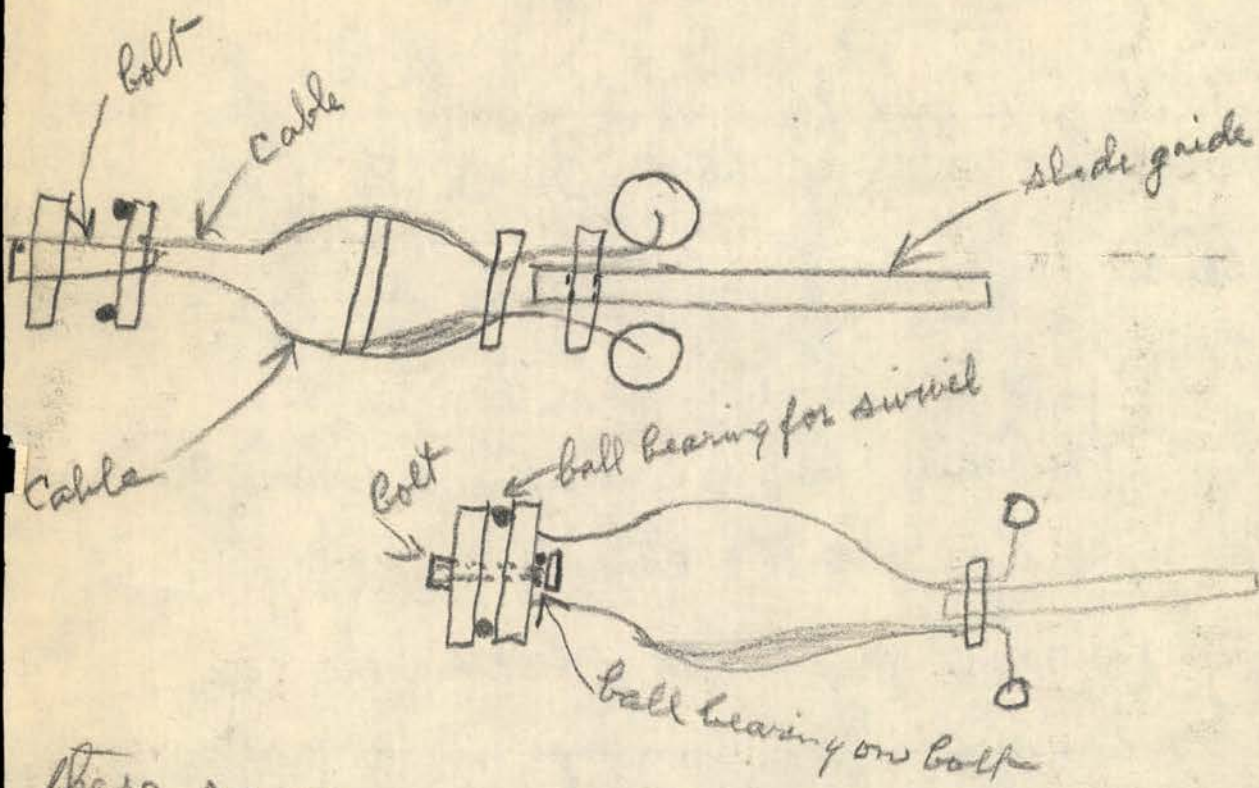


4 The saucers are launched by a catapult.



These saucers are 30 feet and more in dia and not very heavy Ubalstky says. The plane division of our army can soon figure this out I cannot as it is out of my line but I seen the mechanics of it I did not see any propellor on it in the drawings I saw they use a jet on it to so Ubalstky says.

They use pellets in a case in the jet and it fires like a cannon and the recoil sends the saucers very fast